

# **SPECTRUM** COLLECTION

---

Multi-use fabrics for upholstery, panels, wrapped walls and acoustic  
**10 Year Warranty**



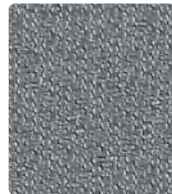
**MAYER**FABRICS



**THEORY10**  
423-037 Alabaster



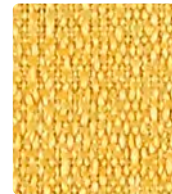
**CONTINUUM**  
422-026 Dove



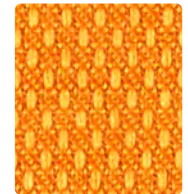
**THEORY10**  
423-016 Charcoal



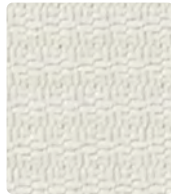
**THEORY10**  
423-017 Stone



**CONTINUUM10**  
422-002 Saffron



**VARIANT10**  
425-019 Orange Peel



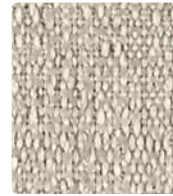
**PRISM10**  
426-027 Zinc



**PRISM10**  
426-026 Dove



**CONTINUUM10**  
422-036 Iron



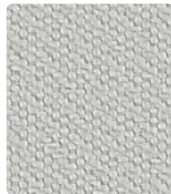
**CONTINUUM10**  
422-027 Stone



**PRISM10**  
426-002 Topaz



**CONTINUUM10**  
422-009 Mandarin



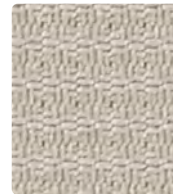
**THEORY10**  
423-026 Dove



**VARIANT10**  
425-016 Flint



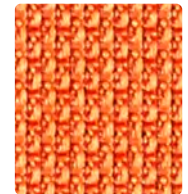
**PRISM10**  
426-016 Charcoal



**PRISM10**  
426-017 Stone



**VARIANT10**  
425-002 Mustard



**OPTIC10**  
424-009 Sunrise



**VARIANT10**  
425-017 Creme



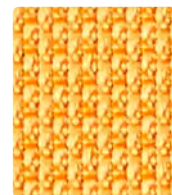
**OPTIC10**  
424-026 Elephant



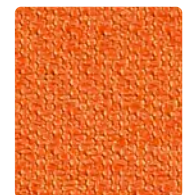
**OPTIC10**  
424-006 Ash



**THEORY10**  
423-010 Mocha



**OPTIC10**  
424-019 Tangerine



**THEORY10**  
423-009 Mango



**CONTINUUM10**  
422-017 Almond



**VARIANT10**  
425-026 Aluminum



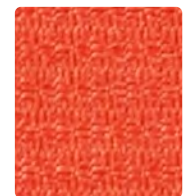
**VARIANT10**  
425-006 Carbon



**PRISM10**  
426-010 Mocha



**CONTINUUM10**  
422-007 Cafe Au Lait



**PRISM10**  
426-021 Tomato



**VARIANT10**  
425-007 Biscuit



**CONTINUUM10**  
422-016 Charcoal



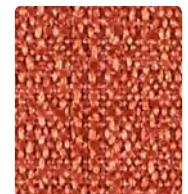
**CONTINUUM10**  
422-006 Onyx



**VARIANT10**  
425-000 Chocolate



**THEORY10**  
423-007 Cafe Au Lait



**CONTINUUM10**  
422-019 Brick



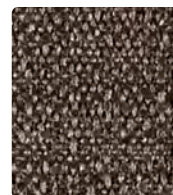
**OPTIC10**  
424-017 Fieldstone



**OPTIC10**  
424-016 Coal



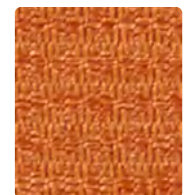
**THEORY10**  
423-006 Onyx



**CONTINUUM10**  
422-000 Espresso



**VARIANT10**  
425-010 Cocoa



**PRISM10**  
426-019 Clay



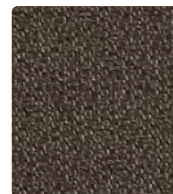
**OPTIC10**  
424-007 Mushroom



**PRISM10**  
426-006 Onyx



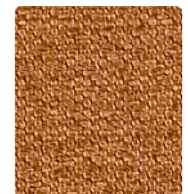
**OPTIC10**  
424-000 Brown Bear



**THEORY10**  
423-000 Espresso

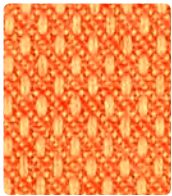


**PRISM10**  
426-007 Cafe Au Lait



**THEORY10**  
423-019 Tobacco

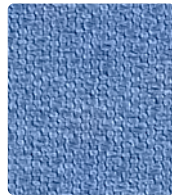




VARIANT10  
425-009 Persimmon



THEORY10  
423-011 Rouge



THEORY10  
423-024 Slate



PRISM10  
426-034 Cerulean



CONTINUUM10  
422-023 Citrine



VARIANT10  
425-013 Jungle



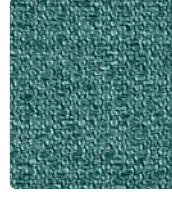
PRISM10  
426-009 Clementine



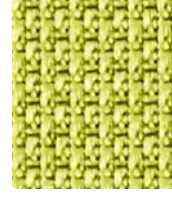
VARIANT10  
425-005 Aubergine



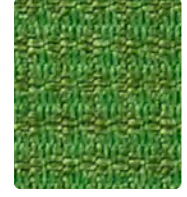
VARIANT10  
425-004 Ink



THEORY10  
423-044 Teal



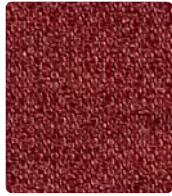
OPTIC10  
424-013 Green Apple



PRISM10  
426-003 Kale



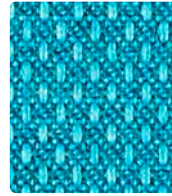
PRISM10  
426-011 Claret



THEORY10  
423-008 Port



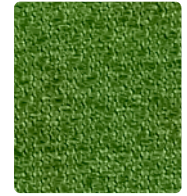
THEORY10  
423-014 Indigo



VARIANT10  
425-014 Prussian



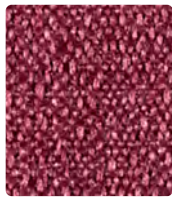
CONTINUUM10  
422-003 Spring



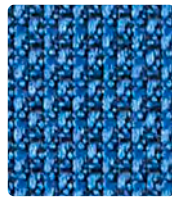
THEORY10  
423-003 Grass



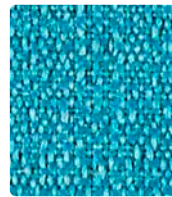
VARIANT10  
425-001 Barn Red



CONTINUUM10  
422-008 Beet



OPTIC10  
424-004 Yale



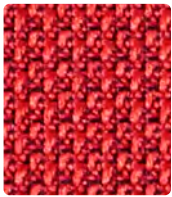
CONTINUUM10  
422-044 Ocean



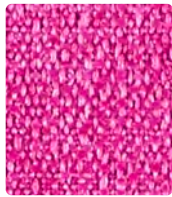
OPTIC10  
424-023 Springtime



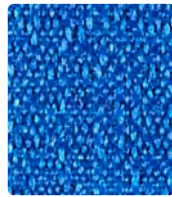
PRISM10  
426-013 Olive



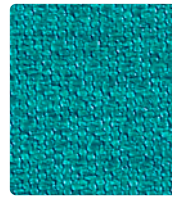
OPTIC10  
424-001 Red



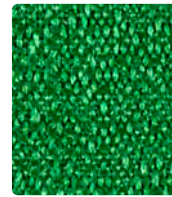
CONTINUUM10  
422-005 Magenta



CONTINUUM10  
422-014 Electric



THEORY10  
423-034 Peacock



CONTINUUM10  
422-013 Emerald



THEORY10  
423-023 Grove



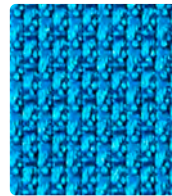
CONTINUUM10  
422-001 Lipstick



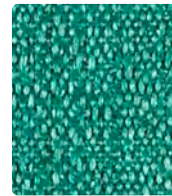
THEORY10  
423-015 Raspberry



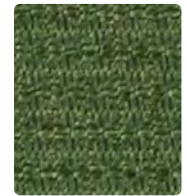
CONTINUUM10  
422-004 Indigo



OPTIC10  
424-024 Ocean



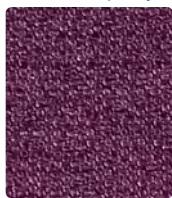
CONTINUUM10  
422-033 Pine



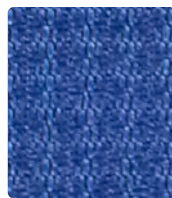
PRISM10  
426-023 Asparagus



THEORY10  
423-001 Lipstick



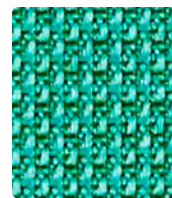
THEORY10  
423-005 Aubergine



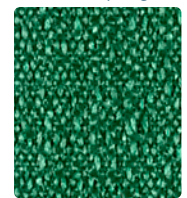
PRISM10  
426-004 Indigo



PRISM10  
426-024 Caribbean



OPTIC10  
424-033 Myrtle



CONTINUUM10  
422-043 Bottle



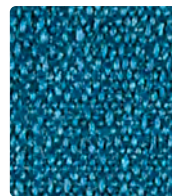
PRISM10  
426-001 Lipstick



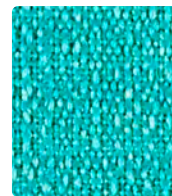
PRISM10  
426-005 Plum



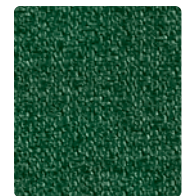
THEORY10  
423-004 Navy



CONTINUUM10  
422-024 Caribbean



CONTINUUM10  
422-034 Turquoise



THEORY10  
423-013 Evergreen

Additional colors are available. Please refer to the Mayer Fabrics website.

# TECHNICAL INFORMATION

## Spectrum Collection

Pattern 54"	Content and Backing	Certifications	Weight/ Linear Yd.	Pattern Repeat	Finish	Abrasion Wyzenbeek	Light- Fastness	Flammability	Cleaning Code
<b>CONTINUUM10</b> <i>Directional Multi-use<sup>+</sup></i>	<b>100% Post-Consumer Recycled Polyester</b> Backing: Latex	<b>GREENGUARD Gold</b>	15 oz.	0.50" H, 0.59" V	Stain Repellent - PFOA & PFOS Free	130,000 <sup>A</sup> Double Rubs	40 hours	Cal. 117-2013 NFPA 260/UFAC Class 1 ASTM E84 (Unadhered) Class 1 or A	WS
<b>OPTIC10</b> <i>Directional Multi-use<sup>+</sup></i>	<b>83% Post-Consumer Recycled Polyester</b> 17% Polyester Backing: Latex	<b>GREENGUARD Gold</b>	16.5 oz.	0.33" H, 0.20" V	Stain Repellent - PFOA & PFOS Free	185,000 <sup>A</sup> Double Rubs	40 hours	Cal. 117-2013 NFPA 260/UFAC Class 1 ASTM E84 (Unadhered) Class 1 or A	WS
<b>PRISM10</b> <i>Directional Multi-use<sup>+</sup></i>	<b>75% Post-Consumer Recycled Polyester</b> 25% Polyester Backing: Latex	<b>GREENGUARD Gold</b>	14.5 oz.	0.17" H, 0.20" V	Stain Repellent - PFOA & PFOS Free	105,000 <sup>A</sup> Double Rubs	40 hours	Cal. 117-2013 NFPA 260/UFAC Class 1 ASTM E84 (Unadhered) Class 1 or A	WS
<b>THEORY10</b> <i>Directional Multi-use<sup>+</sup></i>	<b>75% Post-Consumer Recycled Polyester</b> 25% Polyester Backing: Latex	<b>GREENGUARD Gold</b>	14.5 oz.	0.17" H, 0.39" V	Stain Repellent - PFOA & PFOS Free	150,000 <sup>A</sup> Double Rubs	40 hours	Cal. 117-2013 NFPA 260/UFAC Class 1 ASTM E84 (Unadhered) Class 1 or A	WS
<b>VARIANT10</b> <i>Directional Multi-use<sup>+</sup></i>	<b>75% Post-Consumer Recycled Polyester</b> 25% Polyester Backing: Latex	<b>GREENGUARD Gold</b>	14.5 oz.	0.17" H, 0.20" V	Stain Repellent - PFOA & PFOS Free	140,000 <sup>A</sup> Double Rubs	40 hours	Cal. 117-2013 NFPA 260/UFAC Class 1 ASTM E84 (Unadhered) Class 1 or A	WS

### REDUCED ENVIRONMENTAL IMPACT

These products are GREENGUARD Gold Certified for low chemical and particle emissions to UL standard UL 2818 and may contribute to LEED certification. For complete information visit [mayerfabrics.com](http://mayerfabrics.com) and [UL.com/gg](http://UL.com/gg).

No FR/Antimicrobial/Antibacterial additives.

#### Continuum



The Eco-System icon indicates 100% recycled content.

### TEN YEAR WARRANTY

The SPECTRUM COLLECTION patterns are covered by a 10-year limited performance warranty from the date of installation, when used for seating applications. The SPECTRUM COLLECTION patterns are warranted against wear through (i.e. the complete deterioration of the fabric's structure in a particular area) if properly installed and maintained. This warranty does not cover damage due to abuse, misuse, vandalism, inadequate padding or abrasion from other seating components or furniture, use of improper cleaning agents or methods and use subsequent to ownership by the original purchaser. Mayer Fabrics can provide a copy of the warranty. If the SPECTRUM COLLECTION fails to perform during the 10-year warranty period, the affected area of fabric will be repaired or replaced including labor and materials upon written request of the customer.

Except as expressly provided herein, Mayer Fabrics makes no representations or warranties, express or implied, including, without limitation, any warranty of merchantability or fitness of its products for any particular purpose, and hereby disclaim the same. **CARE AND CLEANING INFORMATION**

WS: Water/Solvent Cleaner

### DYE TRANSFER DISCLAIMER

Certain clothing and accessory dyes (such as those used on denim jeans) may migrate to lighter colors. This phenomenon is increased by humidity and temperature and is irreversible. Mayer Fabrics will not assume responsibility for dye transfer caused by external contaminants. Please check compatibility when using this product in combination with painted or varnished surfaces.

### ADDITIONAL INFORMATION

<sup>A</sup>**Abrasion:** Multiple factors affect fabric durability and appearance retention, including end-user application and proper maintenance. Wyzenbeek results above 100,000 double rubs have not been shown to be a reliable indicator of increased fabric lifespan.

<sup>+</sup>**Multi-Use:** Multi-use fabrics that can be used for upholstery, panels, wrapped walls, and acoustic.

**Custom Capabilities:** All patterns can be custom colored. Minimum yardage applies.

**Digital Swatch Card Color Matching:** Due to color variations on different monitors and color printers, actual swatch colors may vary slightly. Please request a memo sample from Mayer Fabrics to ensure proper color representation.

**Specifications:** Specifications are correct at the time of printing. Additional specifications are available on our website.



These fabrics meet or exceed these ACT performance guidelines. \*Certification Marks owned by ACT®



Water and Stain  
Repellent Finish



This 100% polyester fabric is included in the Underwriter's Laboratory Fabric Recognition Program. Additional testing of this U.L. recognized component is not required on approved panels from participating manufacturers.



**MAYERFABRICS**